

ELECTRIC & AIR POWERED SPIRIT HOISTS

MODEL No.	Description or Type	WEIGHT	Shipping Wt.
180-030	Single ϕ - 120/240 Dual Voltage	106 lbs./48 Kg.	125 lbs./57 Kg.
180-031	Single ϕ - 240 Volt	106 lbs./48 Kg.	125 lbs./57 Kg.
180-032	Single ϕ - 120 Volt	102 lbs./46 Kg.	121 lbs./55 Kg.
180-050	USES COMPRESSED AIR (100 PSI @ 62 CFM)	86 lbs./39 Kg.	114 lbs./52 Kg.
Uses:	5/16 6x19 Class Wire Rope -	#600004	
Or:	5/16 6x31 Class Wire Rope -	#600001	

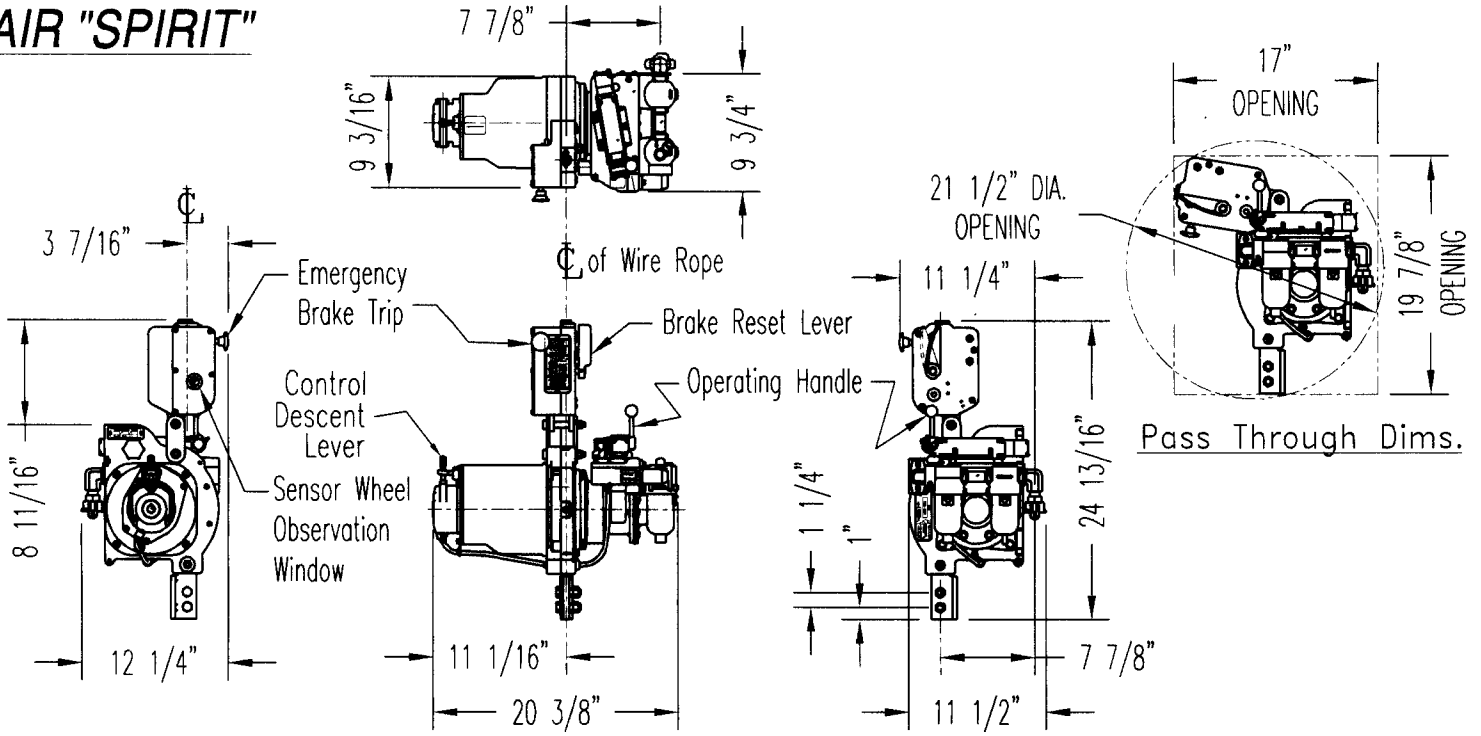
GENERAL NOTES

Air Hoist Performance Chart

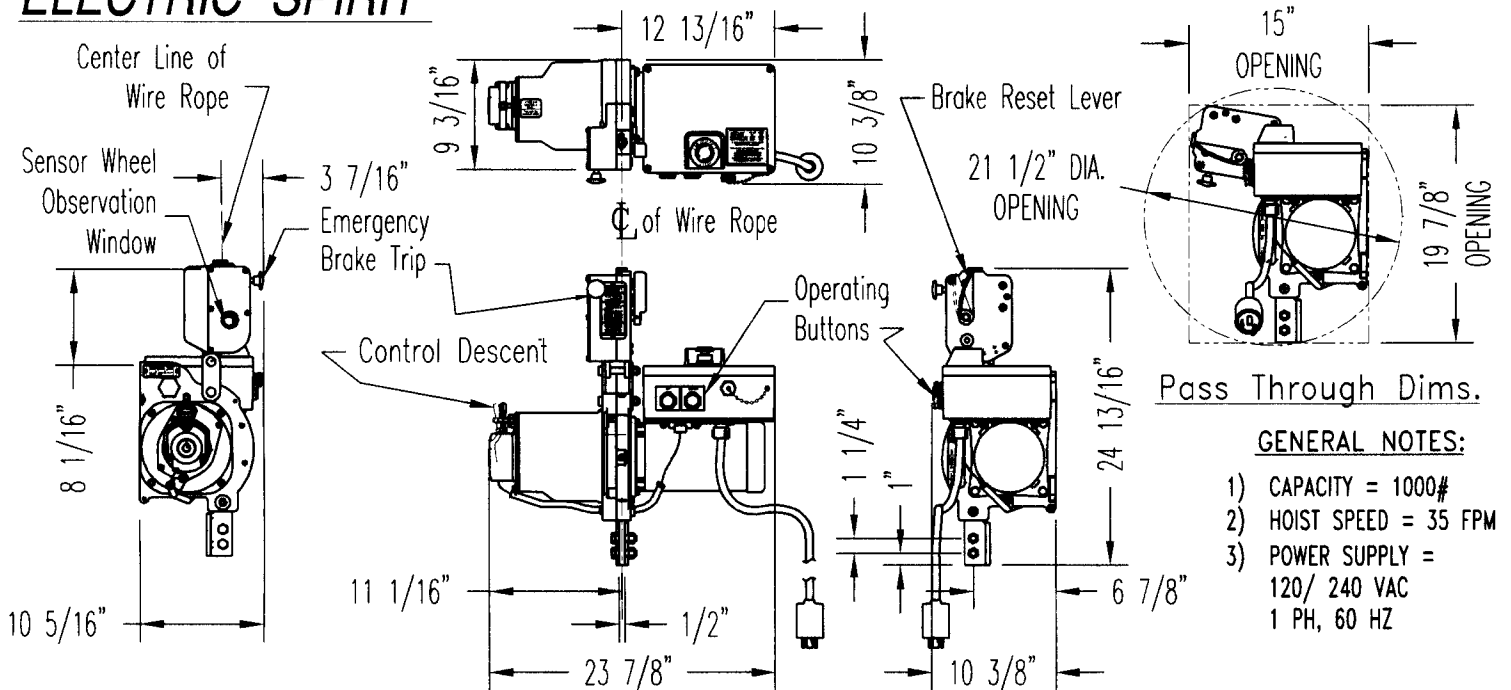
Following Data Compiled for Lifting 1000 lbs.

Travels at:	Air Supplied
35 ft./min.	100 PSI & 62 CFM Air Flow
31 ft./min.	90 PSI & 55 CFM Air Flow
26 ft./min.	80 PSI & 45 CFM Air Flow
18 ft./min.	70 PSI & 35 CFM Air Flow
10 ft./min.	60 PSI & 23 CFM Air Flow

AIR "SPIRIT"



ELECTRIC "SPIRIT"



GENERAL NOTES:

- 1) CAPACITY = 1000#
- 2) HOIST SPEED = 35 FPM
- 3) POWER SUPPLY = 120/ 240 VAC
1 PH, 60 HZ